

Customer :

customer

Customer part :

customer part

Comment :

Comment

S1=0.01

S2=0.2

Tmax=553

Tp S2=592.0

PI=0.06

HI=23

Sample =9324.3

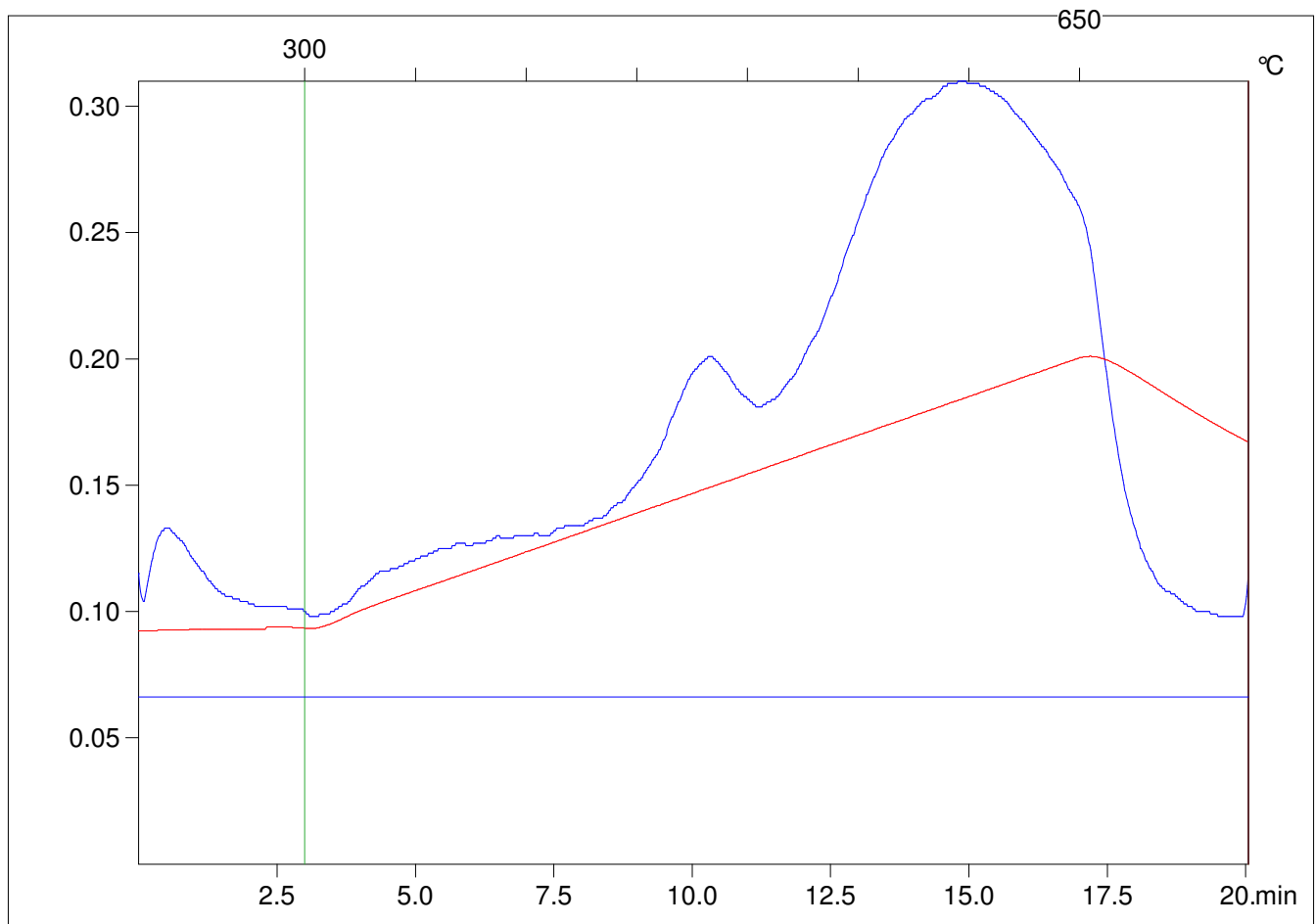
Method =Bulk Rock

Cycle=Basic

KFID(10\*9)=1167

Qty =70.6

TOC=0.88



C:\VINC\PK141015\PK075.R00 : FID pyrolysis graphic

State

Pyro Status

Oxi Status